



# ECC2011-ISRAEL-SHORT

Oil Per Board: 40 uL      Oil Pattern Distance: 35 Feet      Volume Oil Total: 24.08 mL      Total Boards Crossed: 602 Boards

Forward Oil Total: 10.68 mL  
Forward Boards Crossed: 267 Boards

Reverse Oil Total: 13.4 mL  
Reverse Boards Crossed: 335 Boards

Start	Stop	Loads	Speed	Crossed	Start	End	Feet	T.Oil	
1	2L	2R	1	14	37	0.0	0.0	0.0	1480
2	5L	5R	2	14	62	0.0	3.9	3.9	2480
3	6L	6R	3	18	87	3.9	11.5	7.6	3480
4	7L	7R	3	18	81	11.5	19.1	7.6	3240
5	2L	2R	0	18	0	19.1	23.0	3.9	0
6	2L	2R	0	22	0	23.0	28.0	5.0	0
7	2L	2R	0	26	0	28.0	35.0	7.0	0

Start	Stop	Loads	Speed	Crossed	Start	End	Feet	T.Oil	
1	2L	2R	0	30	0	35.0	30.0	-5.0	0
2	8L	8R	1	18	25	30.0	27.5	-2.5	1000
3	7L	7R	2	18	54	27.5	22.4	-5.1	2160
4	6L	6R	2	14	58	22.4	18.5	-3.9	2320
5	5L	5R	3	14	93	18.5	12.6	-5.9	3720
6	4L	4R	1	14	33	12.6	10.7	-1.9	1320
7	3L	3R	1	14	35	10.7	8.8	-1.9	1400
8	2L	2R	1	10	37	8.8	7.4	-1.4	1480
9	2L	2R	0	10	0	7.4	0.0	-7.4	0

Navigation controls: Forward, Reverse, More Info

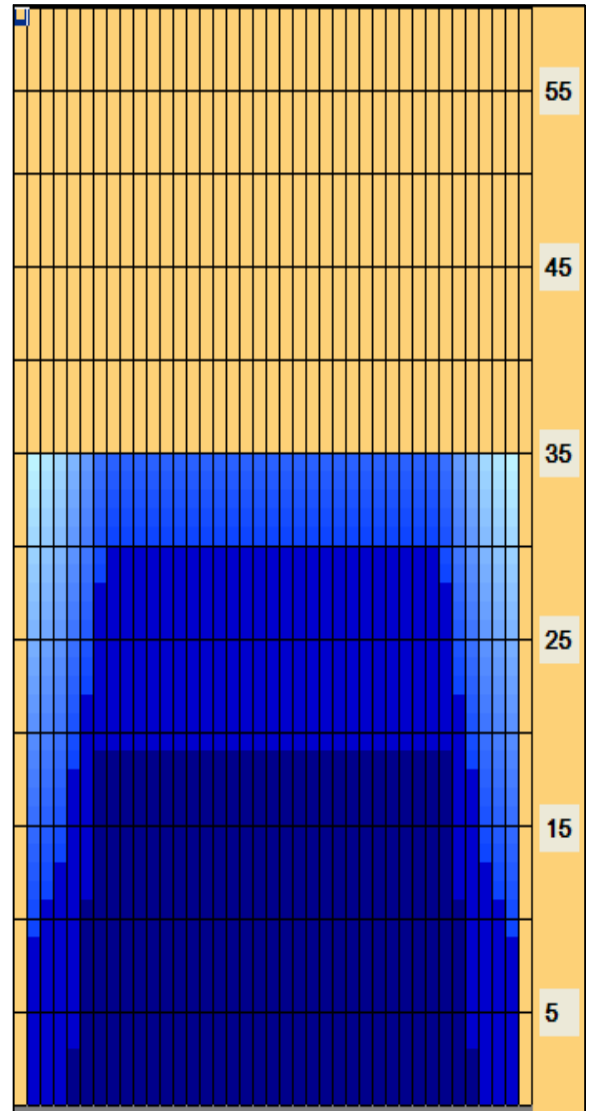
Start	Stop	Loads	Speed	Crossed	Start	End	Feet	T.Oil	
1	2L	2R	0	30	0	35.0	30.0	-5.0	0
2	8L	8R	1	18	25	30.0	27.5	-2.5	1000
3	7L	7R	2	18	54	27.5	22.4	-5.1	2160
4	6L	6R	2	14	58	22.4	18.5	-3.9	2320
5	5L	5R	3	14	93	18.5	12.6	-5.9	3720
6	4L	4R	1	14	33	12.6	10.7	-1.9	1320
7	3L	3R	1	14	35	10.7	8.8	-1.9	1400
8	2L	2R	1	10	37	8.8	7.4	-1.4	1480
9	2L	2R	0	10	0	7.4	0.0	-7.4	0

Navigation controls: Forward, Reverse, More Info

Conditioner:  
Type In or Select One

TransferType:  
Type In or Select One

- Forward
- Reverse
- Combined
- Buff



Arrow Zone Ratios

Item	2-5L:16L-20	6-10L:16-20	11-15L:16L-20	16L-20:20-16R	16L-20:20-16R	20-16R:15-11R	20-16R:10-6R	20-16R:5-2R
ul Arrow	180	744	800	800	800	800	744	180
Zone Ratio	4.44	1.08	1	1	1	1	1.08	4.44

Track Zone Ratios

Item	3L-7L:18L-18R	8L-12L:18L-18R	13L-17L:18L-18R	18L-18R:17R-13R	18L-18R:12R-8R	18L-18R:7R-3R
Description	Outside Track:Middle	Middle Track:Middle	Inside Track:Middle	Middle: Inside Track	Middle:Middle Track	Middle:Outside Track
Track Zone Ratio	2.04	1	1	1	1	2.04

